

SPRING 2023 NEWSLETTER

MESSAGE FROM THE CHAIR | DR. EMILY ELLIOTT



Department chair Dr. Emily Elliott is the primary investigator of the Elliott Attention Recall and Sounds Lab

This spring, the Psychology Department is excitedly engaged in the recruitment of new faculty, colleagues, and new graduate students to enhance and strengthen our research teams. During this process, I am reminded of the tremendously innovative and high quality research that is being done right here at LSU in Baton Rouge, and the privilege it is for me to work with such great colleagues. Large strides are being made towards improving the lives of people in Louisiana and beyond, through our research, outreach, and therapy services at the Psychological Services Center (PSC). Over the last several years, the team of faculty and graduate student providers at the PSC have seen roughly 300 clients per year! Our faculty and students are also traveling to conferences and are sharing their latest work with others in the field, both nationally and internationally. It's wonderful to hear about the awards and accolades that the members of the Psychology Department have earned, and I hope you'll enjoy reading more about it in this edition of the newsletter.

FRONT OFFICE STAFF | 236 AUDUBON HALL

Jessica Erwin
Business Manager
(225) 578-4123
jessicaerwin@lsu.edu

Morgan Stelly
Undergraduate Coordinator
(225) 578-4124
mstel19@lsu.edu

Jamey Wright
Graduate coordinator
(225) 578-3436
jwrig94@lsu.edu

Emily Schneider
Administrative coordinator
(225) 578-8745
eschn17@lsu.edu

CONNECT WITH US ONLINE

WEBSITE | WWW.LSU.EDU/HSS/PSYCHOLOGY/

TWITTER | [LSU_PSYCHOLOGY](https://twitter.com/LSU_PSYCHOLOGY)

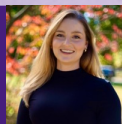
INDUSTRIAL/ORGANIZATIONAL PSYCHOLOGY SPOTLIGHT

DR. DON ZHANG | NSF CAREER AWARD



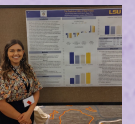
The National Science Foundation has awarded associate professor **Dr. Don Zhang** with the CAREER award for his project "Understanding workplace risk-taking behavior." Zhang's NSF CAREER Award will further his research on how risk-takers at work impact organizations. In the workplace, risk-takers are typically thought of as reckless and irresponsible. Zhang's goal is to provide organizations with a valid measure of workplace risk-taking to help their assessment and selection efforts. He aims to reach organizations with high-risk occupations, such as the chemical and manufacturing industries, to understand how to prevent safety incidents due to reckless risk-taking. With the support of this five-year \$430,000 grant, Zhang will develop a workplace situational judgment test to assess risk propensity relative to the population as well as vocational guidance based on their level of risk tolerance. The instrument he will develop will be available to researchers, industry professionals, and the general public.

HALEY COBB | NEW FACULTY



Industrial/organizational psychology assistant professor **Haley Cobb** will be joining the department this fall. Graduating from Saint Louis University this year with a Ph.D. in I/O Psych, Haley has experience as an adjunct instructor and research assistant. She is interested in researching the following topics: work-nonwork interface, organizational policy and practice, workplace gender equity, diversity and representation in the organization, meta-analysis, psychometrics, and open science.

HANNAH PERKINS | SJDMC POSTER



The I/O cohort presented at the annual Society for Judgment and Decision-Making Conference in San Diego. Third-year doctoral student **Hannah Perkins** placed runner-up for the student poster award this year with her presentation, "The predictive utility of risk profiles." Hannah's research interests include the application of advanced research methodologies to examine employee well-being and the work/non-work interface.

DR. VANESSA BURKE | RRBM HONOR ROLL



Assistant professor **Dr. Vanessa Burke's** publication, "A perfect storm: Customer sexual harassment as a joint function of financial dependence and emotional labor," was selected for the Responsible Research in Business and Management's Honor Roll. The research article explores why service workers experience higher rates of sexual harassment and how the nature of the service industry underpins such experiences.

SYDNEY GREEN | CAREER NEWS



Industrial/organizational psychology doctoral student and member of Dr. Burke's LEAD lab **Sydney Green** has accepted a tenure-track position in the Psychology Department at Denison University starting in the Fall semester of 2023. Sydney's research interests include supporting marginalized employees through organizational diversity, equity, and inclusion.

COGNITIVE AND BRAIN SCIENCES PSYCHOLOGY SPOTLIGHT

DR. JANET MCDONALD | RESEARCH



LSU scientists (left to right) Pennington Biomedical biostatistician Stephanie Broyles, LSU Department of Psychology Professor Janet McDonald, LSU Department of Communication Sciences & Disorders Professor Janna Oetting and LSU speech-language pathologist and project manager Christy Wynn Moland

LSU Department of Communication Sciences & Disorders Professor Janna Oetting, Pennington Biomedical biostatistician Stephanie Broyle, [LSU Department of Psychology Professor Janet McDonald](#), and LSU speech-language pathologist and project manager Christy Wynn Moland have been gathering extensive data and developing tools to accurately assess and treat Developmental Language Disorder within Louisiana and elsewhere. The National Institutes of Health continues to support this research with a new \$2.8 million grant that will help the researchers further develop and test their Disorder within Dialects framework and their materials and methods. As a co-principle investigator of the grant, Dr. McDonald says, "Our goal is to help clinicians identify and serve children using dialect-appropriate materials and methods focused on oral language, and to do this before children struggle to read or fail in school."

LAURYN BURLEIGH | PUBLICATION NEWS & DISSERTATION DEFENSE



Graduate student [Lauryn Burleigh's](#) first authored paper, "Fear in the mind's eye: The neural correlates of differential fear acquisition to imagined conditioned stimuli," was published in the *Journal of Social Cognitive and Affective Neuroscience*. In addition, Lauryn successfully defended her dissertation, "Power to the neuroscientists: an fMRI transfer learning model for multi-study integration." She completed the dissertation in the ReLearn Lab with Dr. Christopher Cox after doing the bulk of her graduate work in the CNAPs lab with Dr. Steven Greening.

VINCENT MEDINA | DISSERTATION PROPOSAL



In Fall of 2022, [Vincent Medina](#) of Dr. Emily Elliott's EARS lab gave an invited talk at Texas A&M about his current research on attention control. He has since passed his dissertation proposal on "Spatial Auditory Targets with Visual Distractors: Do Individual Differences Matter?" and is now a Ph.D. candidate in Cognitive and Brain Sciences Psychology. Since his successful proposal, he spoke at the 2023 annual Southern Society for Philosophy and Psychology in Louisville, Kentucky on the topic of auditory distractions.

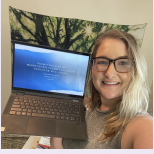
DR. CHRISTOPHER COX | PUBLICATION



Assistant professor [Dr. Christopher Cox's](#) co-authored article, "Decoding semantic representations in mind and brain," published in *Trends in Cognitive Sciences*. State-of-the-art brain imaging studies have produced a variety of (sometimes contradictory) conclusions about the neural systems that support human semantic memory. The article provides an account of this heterogeneity in the neuroimaging literature and general disconnection from behavioral cognitive science: the analysis techniques most commonly used to study the neural bases of semantic representation are insensitive to modes of representation that many cognitive models would predict are utilized by the brain.

SCHOOL PSYCHOLOGY SPOTLIGHT

OCEANN GITTENS | (SSSP) DISSERTATION GRANT AWARD

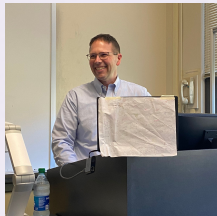


School psychology doctoral student and member of Dr. Anna Long's CRISP lab **Oceann Gittens** has received the Society for the Study of School Psychology (SSSP) Dissertation Grant Award. The award will help fund Oceann's dissertation research on reducing teacher stress and to evaluate the effectiveness of an intervention called BE Mindful (Brief Educator Mindfulness-Based Training). The purpose of the Society of School Psychology Dissertation Grant Awards is to promote excellence in research training in school psychology, thereby enhancing the capability of students to pursue a productive research career that advances the science of school psychology. With this ambitious dissertation project, Oceann is well on the road to achieving just that.

BEHAVIOR ANALYSIS & SCHOOL PSYCHOLOGY SPEAKER SERIES



Last semester, two speakers were invited to discuss relevant topics in school psychology. **Dr. Nathan Call** (pictured on the top left with graduate students) presented on "Studies on the Treatment of Challenging Behavior in Children with Autism Spectrum Disorder across a Continuum of Research Methods," and **Dr. Gary Duhon** spoke about "Building Capacity for Reliable School Based Collection of Behavioral and Social Emotional Data."



This spring semester, the school psychology area is hosting a Behavior Analysis and School Psychology Speaker Series featuring three guests. **Dr. Jennifer Austin** presented "How Trauma-Informed is Applied Behavior Analysis?" in February. In March, **Dr. Scott Ardoin** (pictured bottom left) spoke about "Observing the Unobservable: A Series of Studies Evaluating Reading Comprehension Test Format and Strategies." In April, **Dr. Corina Jimenez-Gomez** will speak on "Culturally Responsive Behavior Analytic Research, Practice, and Supervision."

GEORGETTE METRALIER | HONORS THESIS



Georgette Metralier's undergraduate Honors Thesis, written with the mentorship of school psychologist **Dr. Kelly Clark** (pictured above), has been published: "Returning to School: Teachers' Occupational and COVID-19-Related Stress and Their Perceptions of School Climate." Georgette and Dr. Clark found that teachers' COVID-19 stress, but not job stress, was inversely associated with perceived school climate. Since the completion of her Honors Thesis, Georgette has graduated from LSU with a Bachelor of Science in Psychology.

GRACE BLYTH | SCHOLARSHIP



Dr. Kelly Clark's second-year school psychology student, **Grace Blyth**, has been awarded the Will Bergeron Memorial Scholarship from the Louisiana School Psychological Association. She received this award at the annual conference in Lafayette for her contributions to the field of school psychology. Grace's research interests focus on gifted student mental health as well as improving student well-being, functioning, and school engagement. Post-graduation, she hopes to continue researching as a future faculty member and stay connected to the community through direct service provision.

CLINICAL PSYCHOLOGY SPOTLIGHT

DR. ALEX COHEN AND KIARA WARREN | AFFECTIVE SCIENCE AND PSYCHOPATHOLOGY (ASAP) LAB



Professor [Dr. Alex Cohen](#) is developing AI smartphone technology in partnership with Capital Area Human Services District to track mental states and screen for early indicators of serious mental illness. Dr. Cohen has configured an app that will track facial expressions and speech to alert the individual, their families, and healthcare providers when there are signs of mental deterioration. The app designed to prevent crises and support wellness for patients with serious mental illness is known as QITraq, and it will serve as an evaluation tool for clinicians.



Doctoral student [Kamil Warren](#), a member of Dr. Cohen's research lab, emphasizes the importance of conducting culturally responsive and representative mental health research. Because the Capital Area Human Services District serves a diverse population, the QITraq app accounts for an array of cultural and environmental circumstances; Dr. Cohen aims to develop the app's capacity for spotting cultural and racial healthcare biases. Speaking about QITraq's approach to clinical evaluation, Kamil says, "AI has the potential to generate unbiased analyses that will allow for better representation of different societal groups."

DR. JULIA BUCKNER | ANXIETY AND ADDICTIVE BEHAVIORS RESEARCH LAB AND CLINIC (AABL) RESEARCH



The Anxiety & Addictive Behaviors Research Lab and Clinic (AABL) has partnered with the Our Lady of the Lake outpatient clinic to research how to better help patients receiving Medicaid who have problems related to substance misuse. The research lab hopes to find out what reduces misuse and to identify barriers to post-discharge services for misuse.



In December of 2022, three students in Dr. Buckner's Anxiety and Addictive Behaviors Research Lab presented research posters at the Association for Behavioral and Cognitive Therapies' SIG Expo. [Evan Threeton](#) was awarded an LSU Discover Travel Award to present his undergraduate honors thesis on, "Sexual Orientation and Cannabis Outcomes among Black Individuals: The Role of Cannabis Use Motives." Graduate student [Paige Morris](#) presented research on "Social Anxiety and cannabis-related problems: The serial roles of distress tolerance and cannabis use motives." Graduate student [Caroline Scherzer](#) presented her poster on the topic, "Less alcohol use among COVID-era cohorts of undergraduates sanctioned for violating alcohol policies: the role of protective behavior strategies."

In March 2023, graduate student and AABL member [Faith Stoneking](#) presented her research on body dissatisfaction, social anxiety, and cannabis use at the International Convention of Psychological Science in Belgium.

ERIN VAUGHN | PUBLICATION



Clinical psychology doctoral student [Erin Vaughn's](#) first authored paper was featured in the APA's, "This Week in Psychological Science": "Interpersonal Relationships and Callous-Unemotional Traits During Adolescence and Young Adulthood: An Investigation of Bidirectional Effects in Parent, Peer, and Romantic Relationships." A member of Dr. Paul Frick's Developmental Psychopathology Lab, Erin's research interests include emotional socialization and the development of empathy in childhood, and parenting interventions for children with conduct problems and callous-unemotional traits.

DR. RAYMOND TUCKER | GRANT



A team of military leaders and researchers including LSU associate professor of psychology [Dr. Raymond Tucker](#) received a 3-year 2.7 million dollar grant from congressional funds to implement community-based suicide prevention initiatives for active duty military serving in remote areas and overseas. The research study will use a community psychology-based approach and will be conducted in four phases. Phase I (Formation) will build effective working relationships with military leaders and integrate select members into a suicide prevention task force. Phase II (Data collection) will start preliminary data collection and analysis based on task force recommendations. Phase III (Pilot Purpose-Driven Leader Intervention) will train military leaders in purpose-driven leadership activities and test their effect on suicide within their units. Phase IV (Knowledge products) will consolidate findings and draft the prototype leadership suicide prevention manual as well as publications and dissemination of data.

ORGANIZATION UPDATES

COMMITTEE ON DIVERSITY AND OUTREACH IN PSYCHOLOGY (CDOP)



The Committee on Diversity and Outreach in Psychology (CDOP) organizes and facilitates departmental workgroups in which students, faculty, and staff work together on specific topic areas to achieve meaningful changes to departmental activities as it relates to diversity, equity, and inclusion (DEI). CDOP is home to four workgroups (training, recruitment and retention, community outreach, and improving the evaluation of department climate and DEI activities) connecting students, grad students, faculty, and staff to the committee's missions.



Under the leadership of the co-chairs **Dr. Raymond Tucker** and **Dr. Paul Soto**, the CDOP's workgroups have accomplished initiatives such as the training workgroup hosting speaker **Jungmin Kwon, Ed. D.** (seen in the top left photo), and the recruitment and retention workgroup launching a departmental graduate student mentorship program, a faculty mentorship program, and hosting a social event in November (seen in the bottom left photo).

PSYCHOLOGICAL SERVICES CENTER

The Psychological Services Center (PSC) is an on-campus unit of the LSU Department of Psychology that offers testing and outpatient psychotherapy services for adults, adolescents, and children. Located at 33 Johnston Hall, the clinic serves both LSU students and people from the surrounding Baton Rouge community while providing graduate student training and conducting research in clinical and school psychology. The center is open to anyone in the community, and fees for services are based on a sliding scale (fees are set based on patients' income and ability to pay). Clinical and School Psychology graduate students provide evidence-based therapy under the supervision of licensed LSU Psychology Department faculty. They are equipped to assess and treat a wide variety of psychological and emotional difficulties, such as depression, anxiety, ADHD, and some types of substance abuse. In addition, we offer a variety of innovative research projects (often allowing those who participate in free services or further reduced fees).

LSU PSC

33 Johnston Hall
(225)578-1494
pscsccheduling@lsu.edu
u.lsu.edu/psc

Hope Dawan

PSC Coordinator
34 Johnston Hall
(225)578-4121
hopedawan@lsu.edu

Dr. Matthew Calamia

Center Director
31 Johnston Hall
(225)578-4354
mcalamia@lsu.edu

FACULTY ADMINISTRATION

Psychology Department Chair
Dr. Emily Elliott

Director of Graduate Studies
and CBS Training
Dr. Melissa Beck

Psychology Department
Associate Chair
Dr. Janet McDonald

Director of Undergraduate
Studies
Dr. Katie Cherry

Director of Clinical Training
Dr. Paul Frick

Director of School Training
Dr. Anna Long

Director of I/O Training
Dr. Don Zhang

CURRENT GRADUATE STUDENTS

CLINICAL

- Cristina Abarno
- Paige Adenuga
- Michaela Brown
- Megan Callahan
- Hannah Chapman
- Aubree Corporandy
- Kelsey Coulthard
- Tovah Cowan
- Katrail Davis
- Ross Divers
- Kimberly Ellison
- Mara Lewis Ferrie
- Jessica Gerner
- Nina Glover
- Courtney Goetz
- Ole Edvard Granrud
- Kristen Hollas
- Madeleine Hansen
- Abigail Issarraras
- Emily Kemp
- Christian Ledet
- Elizabeth Lewis
- Michael Masucci
- Kaitlyn McCauley
- Luke Miller
- Taylor Miller
- Joshua Montrenes
- Paige Morris
- Emma Moscardini
- Nicolas Oakey-Frost
- Sarah Pardue-Bourgeois
- Paige Picou
- Jeffrey Powers
- Erika Pugh
- Christopher Reed
- Emily Robertson
- Anthony Robinson
- Ashlyn Runk
- Caroline Scherzer
- Allison Smith
- JoHannah Smith
- Paul Spano
- Julianne Speck
- Faith Stoneking
- Celeste Tevis
- Erin Vaughan
- Kiara Warren
- Paige Weir

SCHOOL

- Madeline Blocker
- Grace Blyth
- Grace Chen
- Jensen Chotto
- Jacob DeBoer
- Cassie Feck
- Oceann Gittens
- Sarah Holmes
- Julianne Hymel
- Mary Inabnett
- Parker Levins
- Elizabeth Linton
- Jessica Munson
- Kristen Newell
- Rochelle Picardo
- Alison Ruby
- Jodie Waits
- Ar'Reon Watson
- Kyle Wilson
- Meagan Zeitvogel

COGNITIVE AND BRAIN SCIENCES

- Piper Bordes
- Lauryn Burleigh
- Brianna Cairney
- Felicia Chaisson
- Brandon Eich
- Rachel Evans
- Chloe Kindell
- Jessica Hacker
- Alan Harrison
- Megan Henshaw
- Matthew Jimenez
- Alexander Lawriw
- Stephanie Lopez
- Vincent Medina
- Stephanie Saltzmann
- Lauryn Schiro
- David Tomshe
- Stan West

INDUSTRIAL/ORGANIZATIONAL

- Tyler Cowley
- Sydney Green
- Chelsea Hightower
- Gino Howard
- Hannah Perkins
- Katelyn Reeves
- Sydney Roux